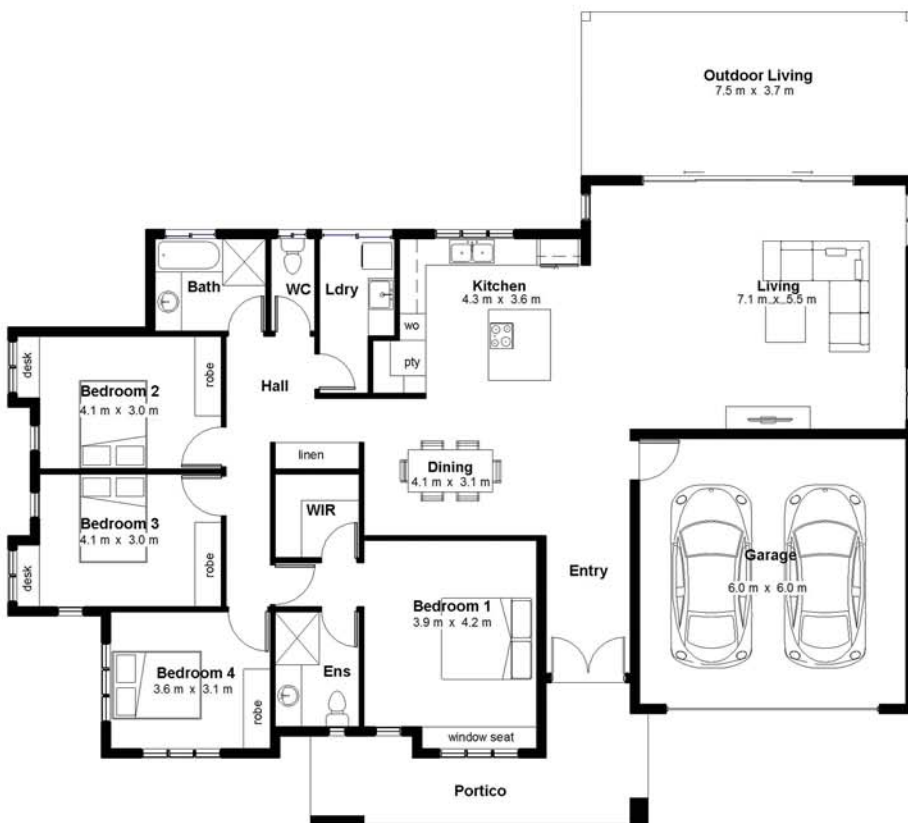


# Stirling 268



## Spacious Executive Living

A stunning island kitchen, large open plan living and dining opening out to a superbly sized outdoor living area.

Well appointed bedrooms, bathrooms and plenty of storage complete this spacious executive residence.

BED	BATH	CAR	LIVING
4	2	2	1

LENGTH: 18.3m      WIDTH: 20.4m

INTERNAL LIVING: 183m<sup>2</sup>      GARAGE: 40m<sup>2</sup>

OUTDOOR LIVING: 29m<sup>2</sup>      PORTICO: 16m<sup>2</sup>

TOTAL AREA: 268m<sup>2</sup>



We are local Darwin builders with over **30 years experience** building homes just right for our tropical environment.

**0400 180 760**  
www.territoryhomes.com.au

