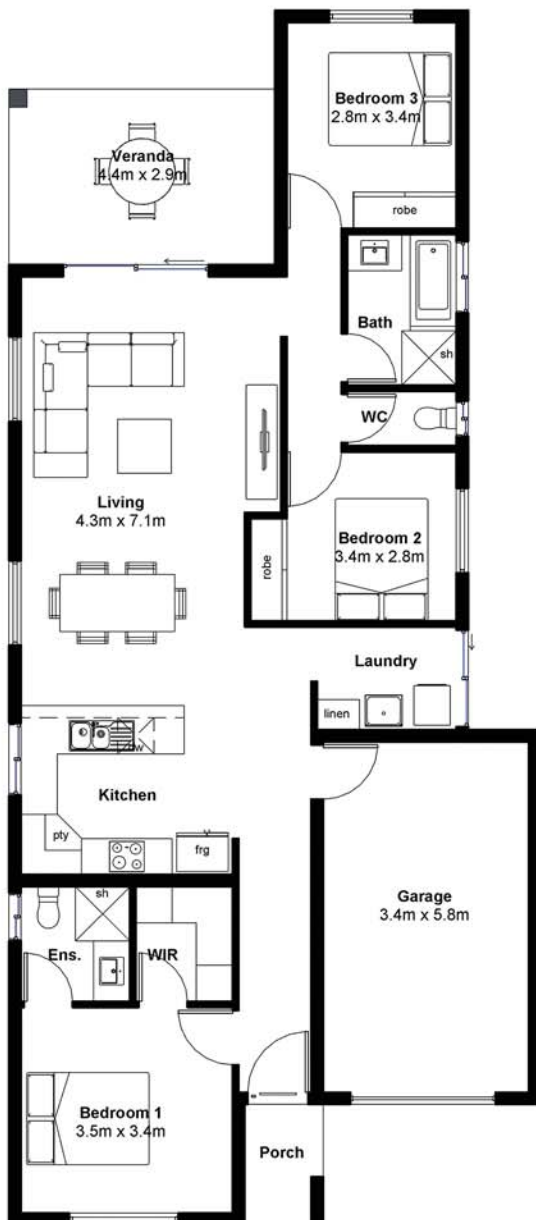


Peron 150Z



Bright and breezy affordable living

- ✓ Solid construction with rendered and painted concrete block walls
- ✓ Single garage with remote control
- ✓ Glass feature entry door
- ✓ Fully airconditioned
- ✓ Floor to ceiling tiling in bathrooms
- ✓ Stone benchtops, gloss cabinets & soft close drawers
- ✓ Energy efficient lighting including LED downlights

BED	BATH	CAR	LIVING
3	2	1	1

LENGTH: 18.1m WIDTH: 8.8m

INTERNAL LIVING: 111m² GARAGE: 22m²

OUTDOOR LIVING: 13m² PORTICO: 4m²

TOTAL AREA: 150m²



We are local Darwin builders with over **30 years experience** building homes just right for our tropical environment.

0400 180 760
www.territoryhomes.com.au