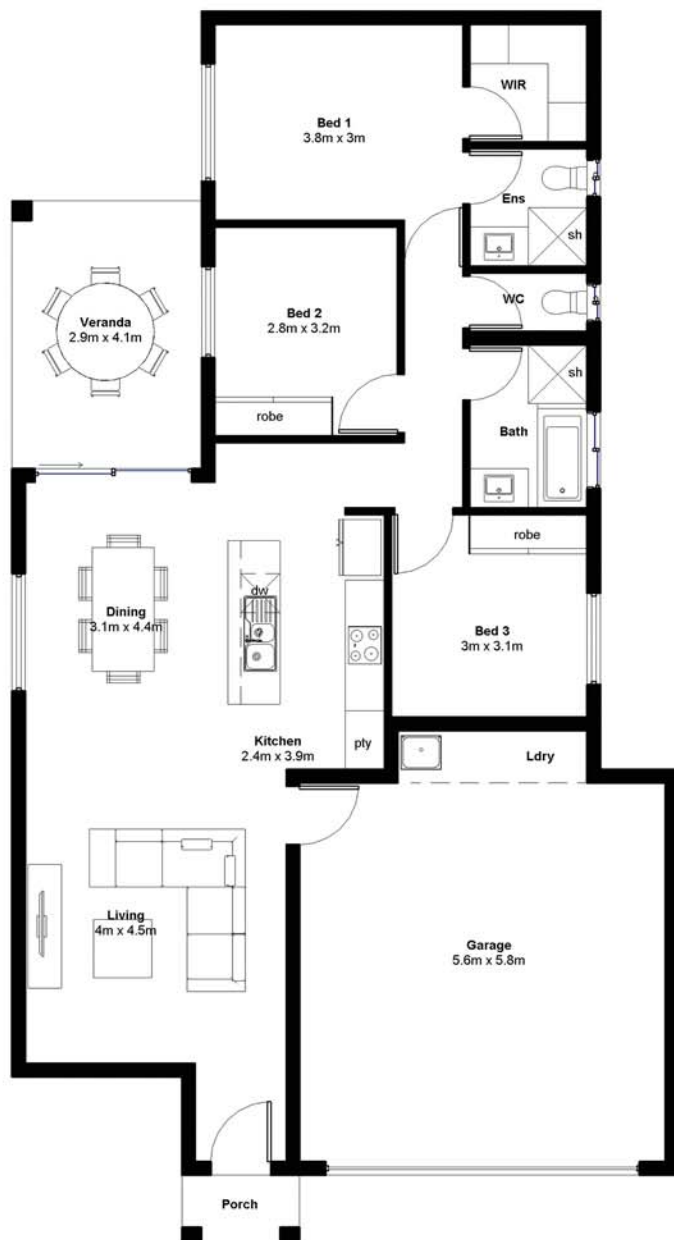


# Glyde 156



## Stunning open plan style

- ✓ Solid construction with rendered and painted concrete block walls
- ✓ Double garage with remote control
- ✓ Glass feature entry door
- ✓ Fully airconditioned
- ✓ Floor to ceiling tiling in bathrooms
- ✓ Stone benchtops, gloss cabinets & soft close drawers
- ✓ Energy efficient lighting including LED downlights

BED	BATH	CAR	LIVING
3	2	2	1

LENGTH: 18.9m      WIDTH: 10.2m

INTERNAL LIVING: 103m<sup>2</sup>      GARAGE: 38m<sup>2</sup>

OUTDOOR LIVING: 13m<sup>2</sup>      PORTICO: 2m<sup>2</sup>

TOTAL AREA: 156m<sup>2</sup>



We are local Darwin builders with over **30 years experience** building homes just right for our tropical environment.

**0400 180 760**  
www.territoryhomes.com.au