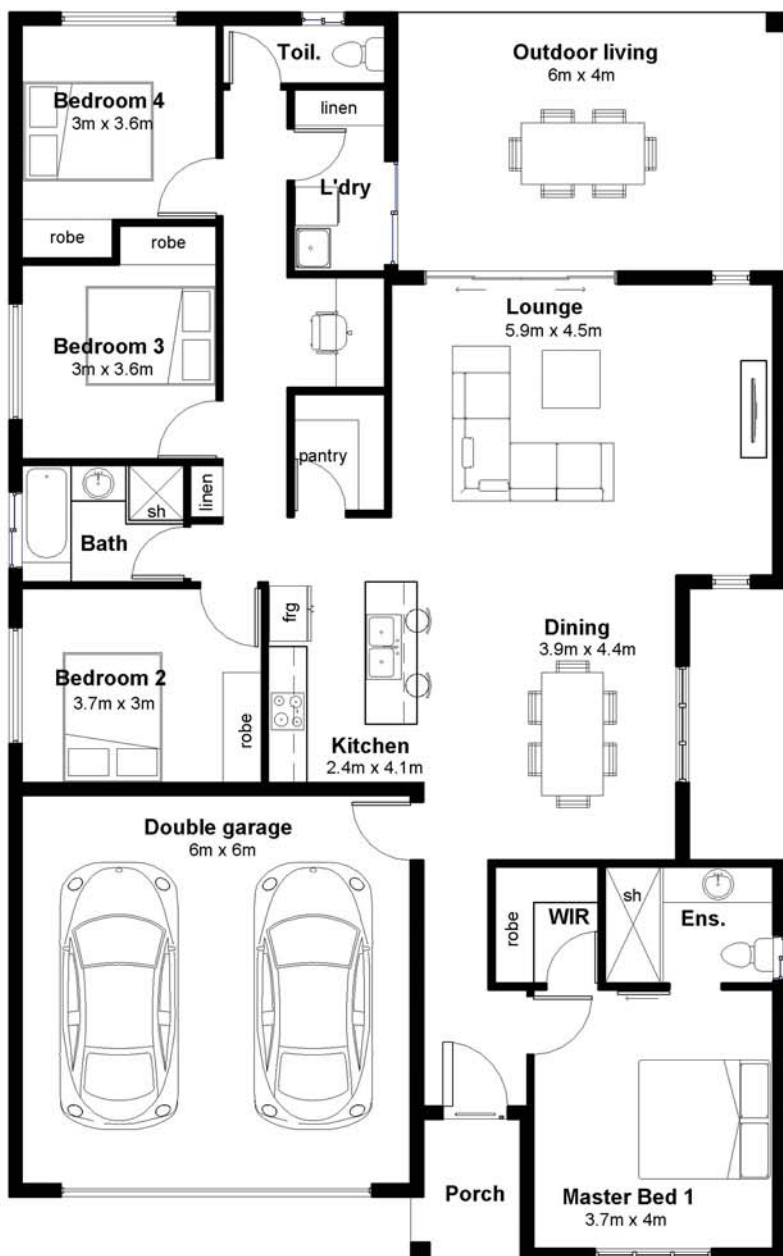


Finniss 219



The clever home for Muirhead

Finniss 219 has 4 bedrooms, a study nook, breezy open plan living and outdoor entertaining area.

With a stunning designer kitchen complete with walk in pantry and generous bedrooms, all with built in robes, it's easy to see why the Finniss 219 is a favourite family home.

BED	BATH	CAR	LIVING
4	2	2	1

LENGTH: 19.3m WIDTH: 12m

INTERNAL LIVING: 152m² GARAGE: 40m²

OUTDOOR LIVING: 24m² PORTICO: 3m²

TOTAL AREA: 219m²



We are local Darwin builders with over **30 years experience** building homes just right for our tropical environment.

0400 180 760
www.territoryhomes.com.au